

Name: _____

Perpendicular Functions

The students below answered the following problem.

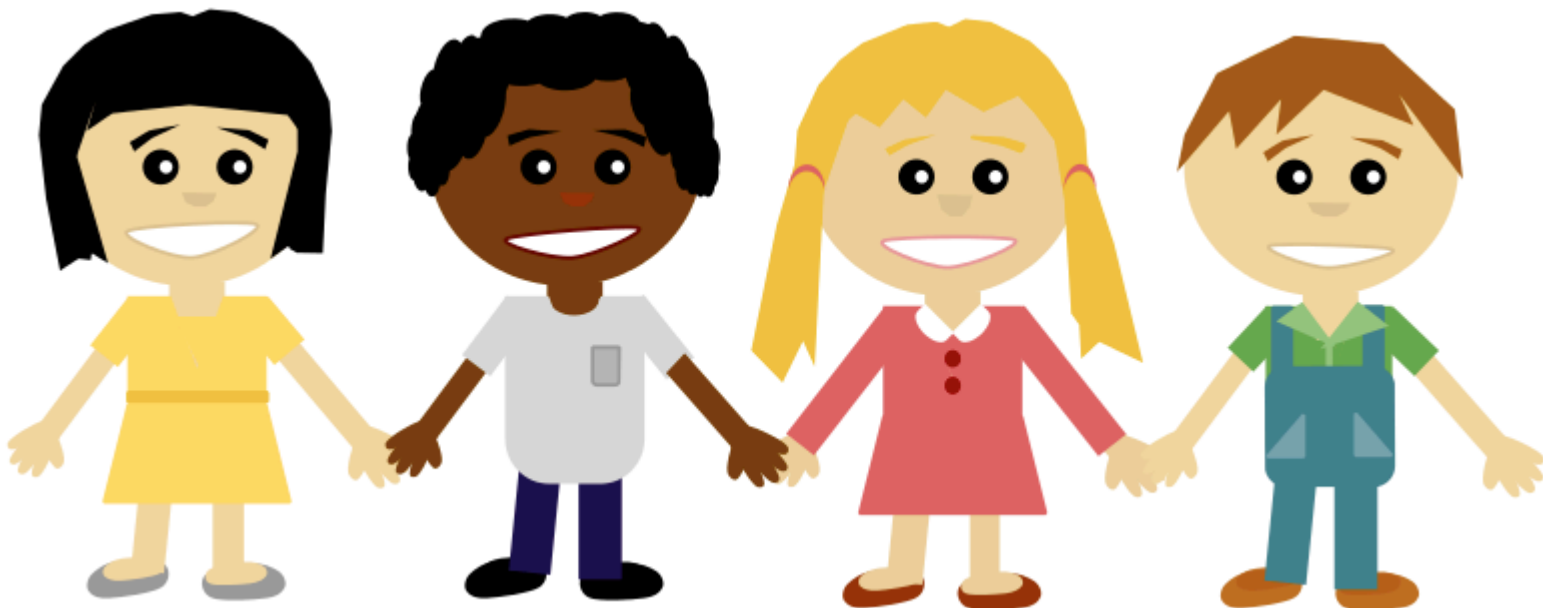
Find the function that is perpendicular to $y = 3x + 2$.

$$y = 9x + 2$$

$$y = x + 1/2$$

$$y = 1/3x + 5$$

$$y = 2x + 1/3$$



Explain how the student got that answer. Are there multiple answers to this question?